

Mechanical Interlock for Reversing Contactors

MOUNTING TYPE OF MOUNTING	BASE	CONTACTOR TYPE		
		914 CAT. CODE	915 CAT. CODE	916 CAT. CODE
Elevated	insulated base	AC10M1	AC10M5	AC10M9
Surface	insulated base	AC10M2	AC10M6	AC10M10
Elevated	Sheet Steel	AC10M3	AC10M7	AC10M11
Surface	Sheet Steel	AC10M4	AC10M8	AC10M12

Note : When the NC contactor is in its de-energised state. the auxiliary contact block is in its actuated mode, consequently, care must be taken to ensure the contact arrangement is in line with the requirements.

Terminal capacity of main contacts

CONTACTOR TYPE	SUITABLE FOR		
	CABLE SOCKET	BUSBAR	
	A	CU MM2	Al MM2
912		10 x 2.5	10 x 2.5
914,924,934	200	25 x 5	40 x 5
915,925,935	400	25 x 5	40 x 5
916,926,936	900	40 x 10	50 x 10

Terminal capacity of auxiliary contacts : 10 mm²

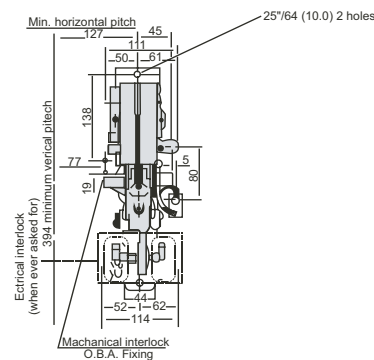
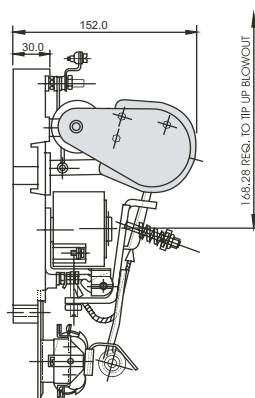
Weights (Kg.)

TYPE	Kg.	TYPE	Kg	TYPE	Kg	Type	Kg
912	3* / 4#	934	10.0	935	17.3	936	32.3
914	8.2	915	13.6	916	21.8		
924	9.1	925	17.3	926	32.3		

Catalogue Code

Prod. code	TYPE	50A	150A	300A	600A
	Normally open	912	914	915	916
	Normally close		924	925	926
Normally open (accelerating type)			934	935	936

Dimensions (mm)



Note :
1) Minimum arcing requirements from any point on outer periphery of blow out arc shield to door or top of enclosure is:
89 at 600 V.DC Max
64 at 250 V.DC Max

Single pole normally open 914 (150A)