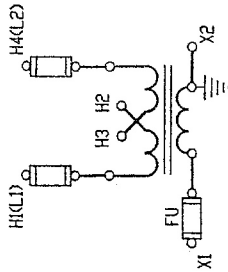
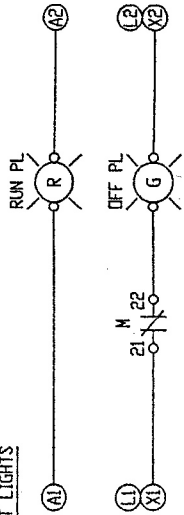


OPTIONS

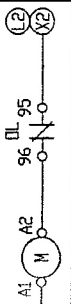
TRANSFORMER



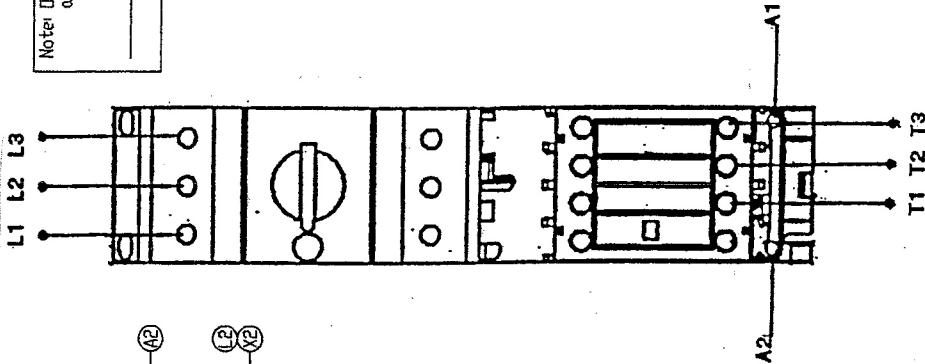
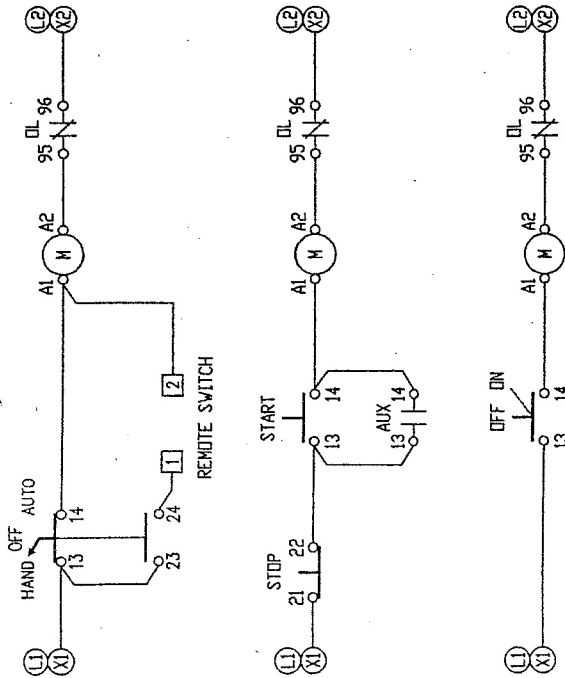
PILOT LIGHTS



Note: In B05 Overload 95 and 96 terminals are reversed on connection



CONTROL CIRCUIT



WARNING

HAZARDOUS VOLTAGE
WILL CAUSE DEATH OR SERIOUS INJURY.
TO AVOID ELECTRICAL SHOCK OR BURN
TURN OFF MAIN AND CONTROL VOLTAGES
BEFORE PERFORMING INSTALLATION OR
MAINTENANCE

REV	DESCRIPTION	DATE	APP'D	DRAWN	LR
				CHECKED	TG
				APPROVED	
		DATE			
		01/16/07			
Description					
MBS32 / MBS63					
Combinations					
Drawing No.				WD-MBS323	
REV.				0	



Electrical and Electronic
Controls, Inc.
3891 Route 64
Brewster, NY 10509 USA
(845)-278-5777 Fax (845)-278-5444
Email: info@eecontrols.com
www.eecontrols.com